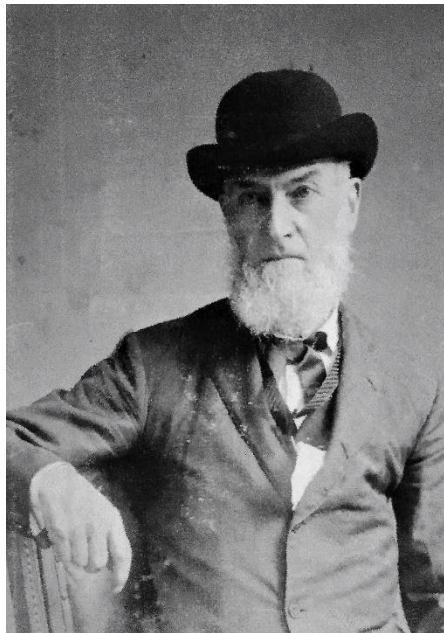




Stories in Stone: Benjamin Grove, Cave Hill Cemetery's Second Designer 1823-1915

By Alexandra Luken



Benjamin Grove

Benjamin Grove was born in Birmingham, England in 1823, and immigrated to the United States before 1850 with his wife, Elizabeth Robinson, whom he married on May 23, 1848. The couple settled first in New Albany, IN. In 1851, Grove received his first commission for the design of St. Michael's Cemetery in Louisville, KY.

Considered a prolific cemetery landscape architect, his skillset encompassed those of civil engineer, surveyor, mapmaker and artist. Working primarily on the design of parks and cemeteries, Grove was also employed as a surveyor for the Fort Wayne and Indianapolis Railroad, and later for the L & N Railroad.

Following the death of the Edmund Francis Lee, the original planner of Cave Hill Cemetery, in 1858, Benjamin Grove accepted the commission to continue the work started by Lee, designing sections A and P. In the 1880s, he added to the design of several more sections in the cemetery.

In addition to his cemetery design work, Grove designed two Louisville city parks in 1860. The first, Southern Park, existed briefly between Brook and S. Third Street. In 1886 the land was given to the House of Refuge for farming and gardening. At the same time, he laid out the grounds for the House of Refuge on the property of the former Oakland Cemetery (1850-1860). The House of Refuge (1854-1920) was a home for dependent and delinquent children. The facilities were seized by the Union Army as a hospital from 1861-1865, and The House of Refuge admitted its first child as the close of the war. In 1920, the facility closed and relocated to a larger campus in Lyndon, KY. The House of Refuge grounds were then incorporated into the University of Louisville's Belknap Campus.

The second park design in 1860 was for an inner-city park on the north side of Rowan St. between 22nd and 26th Streets. Financial support of the park projects was abandoned during the Civil War. However, the city's commitment to the concept of the park at that location was strong enough for Benjamin Grove to erect his family residence at 518 North 26th Street in 1864. The house, which still stands, was placed on the National Register of Historic Places in 1984 because of Grove's comparable reputation to Frederick Law Olmsted. His seamless integration of picturesque landscaping techniques solidifies Cave Hill's ranking amongst the most scenic cemeteries in the world.

Benjamin Grove's active career extended from 1851 until 1909. His design work for cemeteries, parks, subdivisions, and institutional landscapes extends throughout Alabama, Georgia, Indiana, Kentucky, Louisiana, Missouri, Ohio, Tennessee, and Texas.

Cemeteries designed by Benjamin Grove include:

St. Michael's Cemetery, Louisville, KY
St. Louis Cemetery, Louisville, KY
Linden Grove Cemetery, Covington, KY
Grove Hill Cemetery, Shelbyville, KY
Battle Grove Cemetery, Cynthiana, KY
Adath Israel Cemetery, Louisville, KY
Greendale Cemetery, Lawrenceburg, IN
Greenwood Cemetery, Clarksville, TN
Hollywood Cemetery, Jackson, TN
Metairie Cemetery, Metairie, LA
Mound Hill Cemetery, Gallipolis, OH
Riverdale Cemetery, Columbus, GA

Benjamin Grove died in Louisville on March 17, 1915 at age 92. He is interred in Section O Lot 13.

https://www.tribstar.com/news/lifestyles/historical-perspective-landscape-gardener-benjamin-grove-designed-collett-park/article_aa60e6d3-9e79-5c82-8bf7-1d132b02ee55.html

<https://www.newspapers.com/clip/21772144/the-courier-journal/>

<https://historiclouisville.weebly.com/house-of-refuge-belknap-campus-ormsby-village.html>

<https://www.newspapers.com/clip/80282573/clarksville-weekly-chronicle/>

<https://www.newspapers.com/clip/80284253/the-courier-journal/>

<https://www.newspapers.com/clip/80282291/the-courier-journal/>

<https://www.newspapers.com/image/118919091/?terms=%22benjamin%20grove%22&match=>



**LANDSCAPE GARDENING AND
CEMETERY ENGINEERING.**

BENJAMIN GROVE, TOPOGRAPHICAL AND
CEMETERY ENGINEER, is prepared to make
Topographical Surveys and Designs for new Rural
Cemeteries, Public Parks, Suburban Pleasure Grounds,
Private Gardens, &c., and to lay out the same accord-
ing to plan.

The numerous Cemeteries, Pleasure Grounds, and
other Landscape Improvements which he has de-
signed and laid out in this country have given satis-
faction to his patrons, and he gladly refers to them in
soliciting a continuance of public favor. Address
127 dim BENJAMIN GROVE, Louisville, Ky.

**LANDSCAPE GARDENING AND
CEMETERY ENGINEERING.**

BENJAMIN GROVE,
Topographical and Cemetery Engineer.

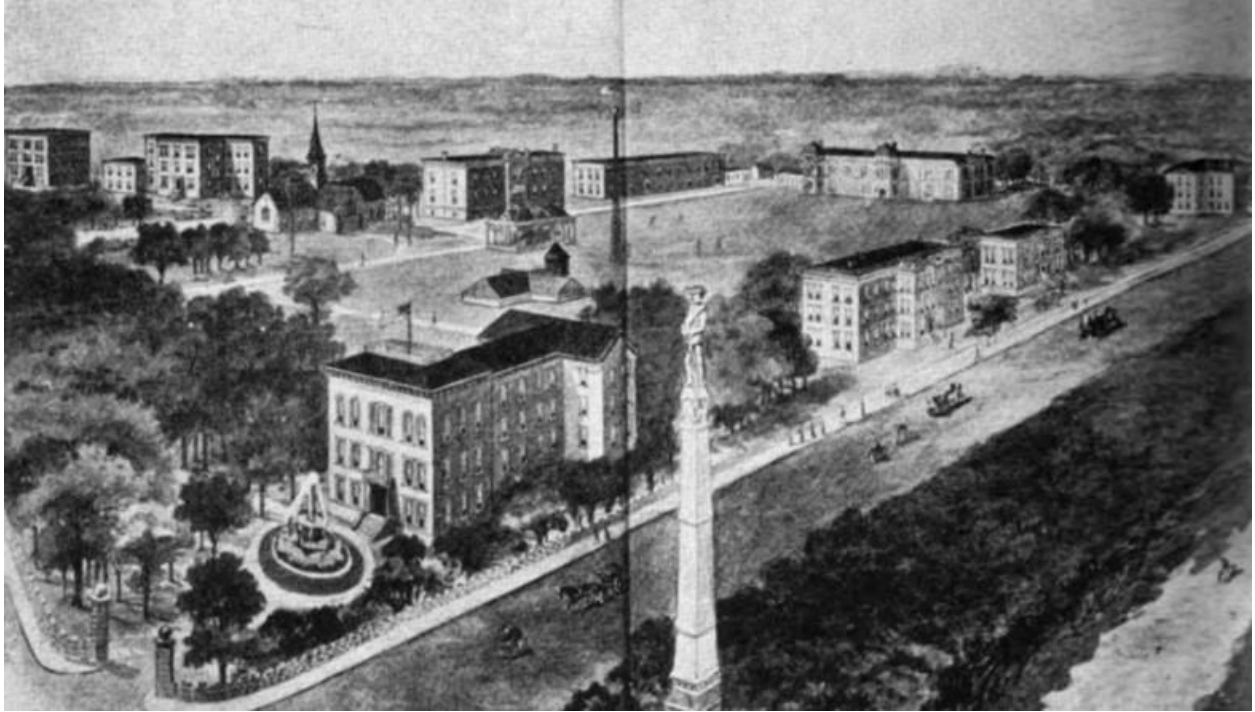
 **TOPOGRAPHICAL SURVEYS AND** 
Plans made for Rural Cemeteries, Public
Parks, Pleasure Grounds, Suburban Gar-
dens, etc. All designs staked and laid out according to
plan, and superintendence given when required. Ad-
dress
127 dim* BENJAMIN GROVE,
Louisville, Ky.



House of Refuge 1875



House of Refuge 1898



House of Refuge Grounds, 1900